

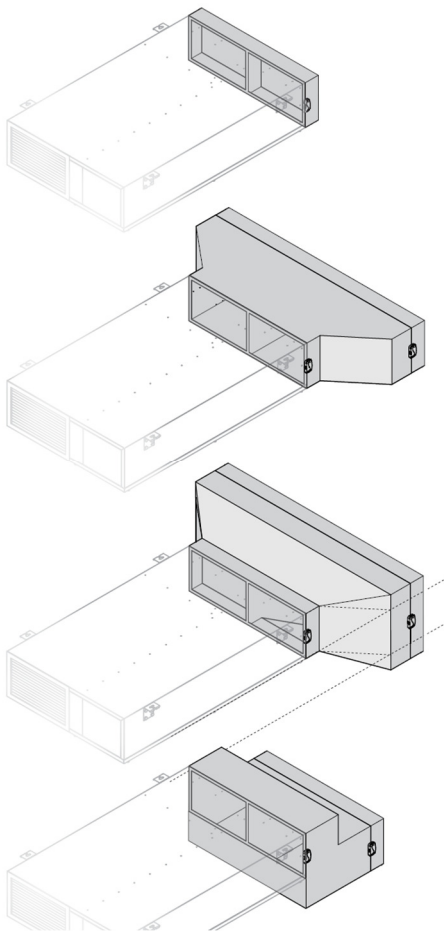
ecovent Transition & Plenum Ducts

Transition Duct Dimension & Configuration Helpsheet

VES can supply transition pieces and plenum boxes to suit **VES** units and specific site requirements. These documents are designed to help you record your required duct dimensions and any individual specific requirements.

Fill in the fields against the relevant duct style, including any specific site designations and save.

Longer duct lengths (>300mm) are normally supplied in two parts as a short plenum to suit the window or wall aperture and a longer transition duct.



Standard transition duct

With the louvre wider than the unit but at the same level.

Wider transition duct

With the louvre the same size and level as the unit.

Wider/taller transition duct

With the louvre wider and taller than the unit.

Stepped transition

With the louvre the same size as the unit but with the level offset.

Important

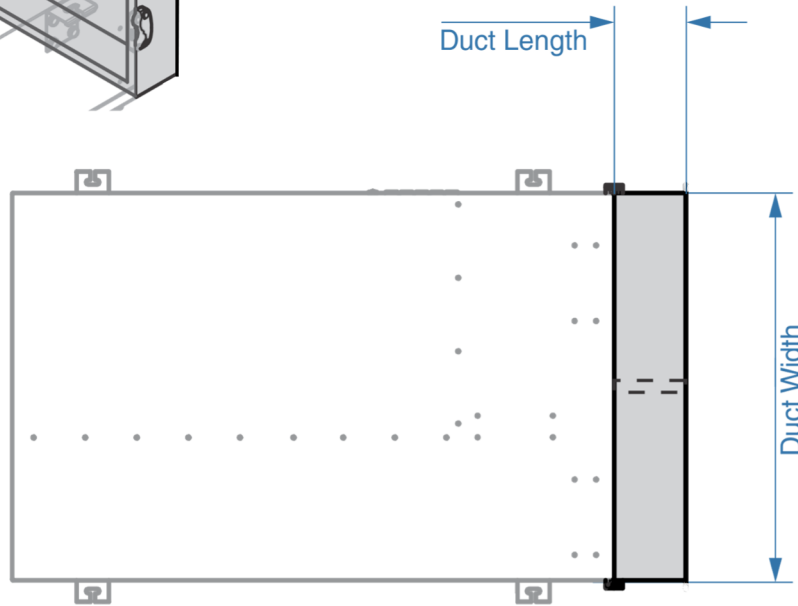
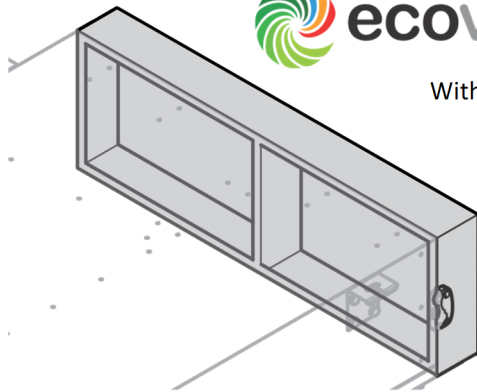
Additional copies of this and the necessary supporting documents are available by contacting VES, by visiting www.ves.co.uk and following the 'information centre' link or by using the QR Code below and navigating to the appropriate product document.





ecovent Straight Transition Duct

With the louvre the same size and level as the unit. Internal Flange.



Powdercoated White to **RAL9010** as standard
Specify alternative colour or galvanised finish

Company:

.....

Contact Name:

.....

Address:

.....

.....

Telephone No.:

email.:

.....

Job Ref/Order No.:

Unit/Window Ref.:

.....

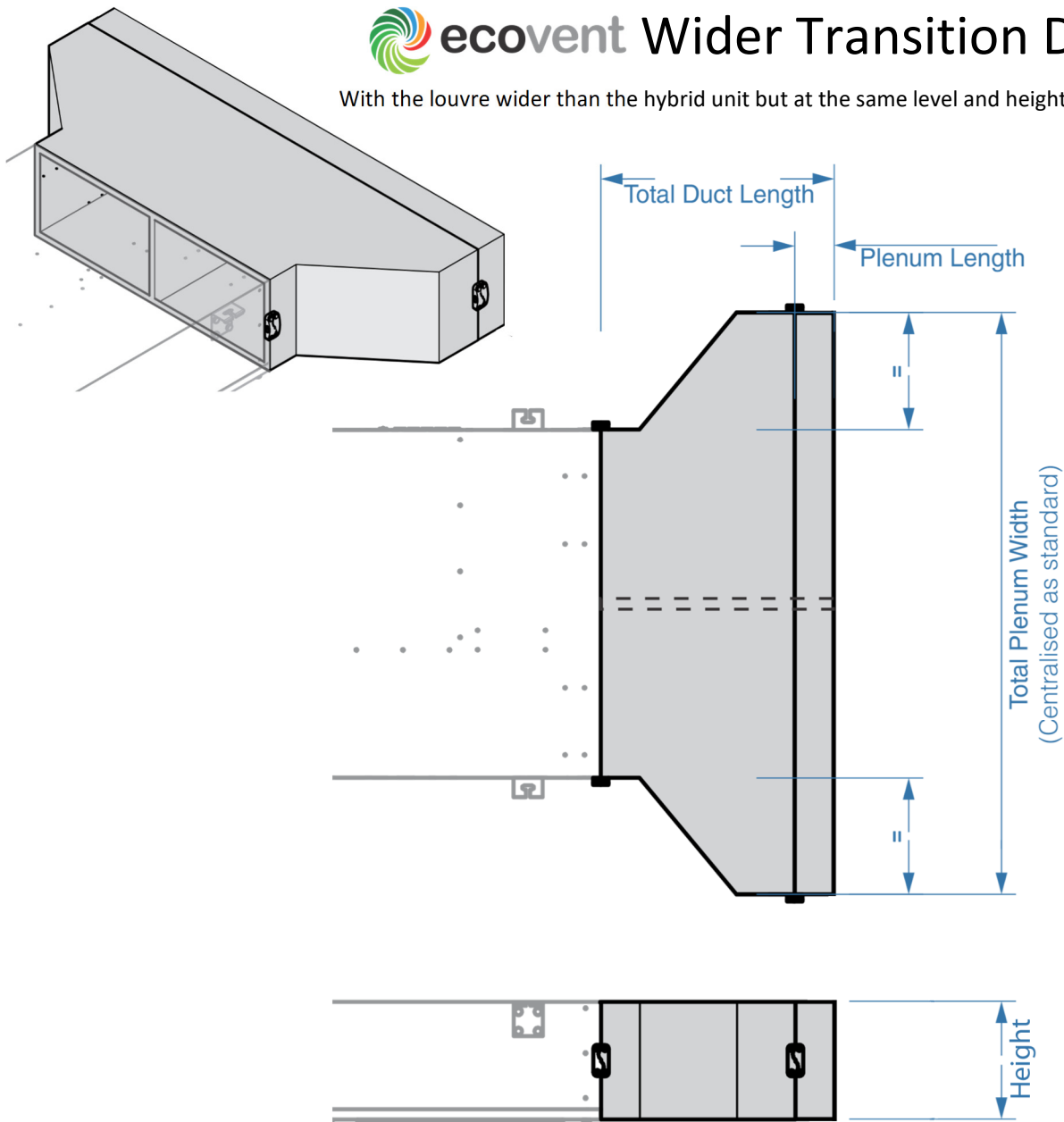
Notes:

.....



Wider Transition Duct

With the louvre wider than the hybrid unit but at the same level and height. Internal flange



Powdercoated White to **RAL9010** as standard
Specify alternative colour or galvanised finish

Company:

Contact Name:

Address:

Telephone No.:

Job Ref/Order No.:

Notes:

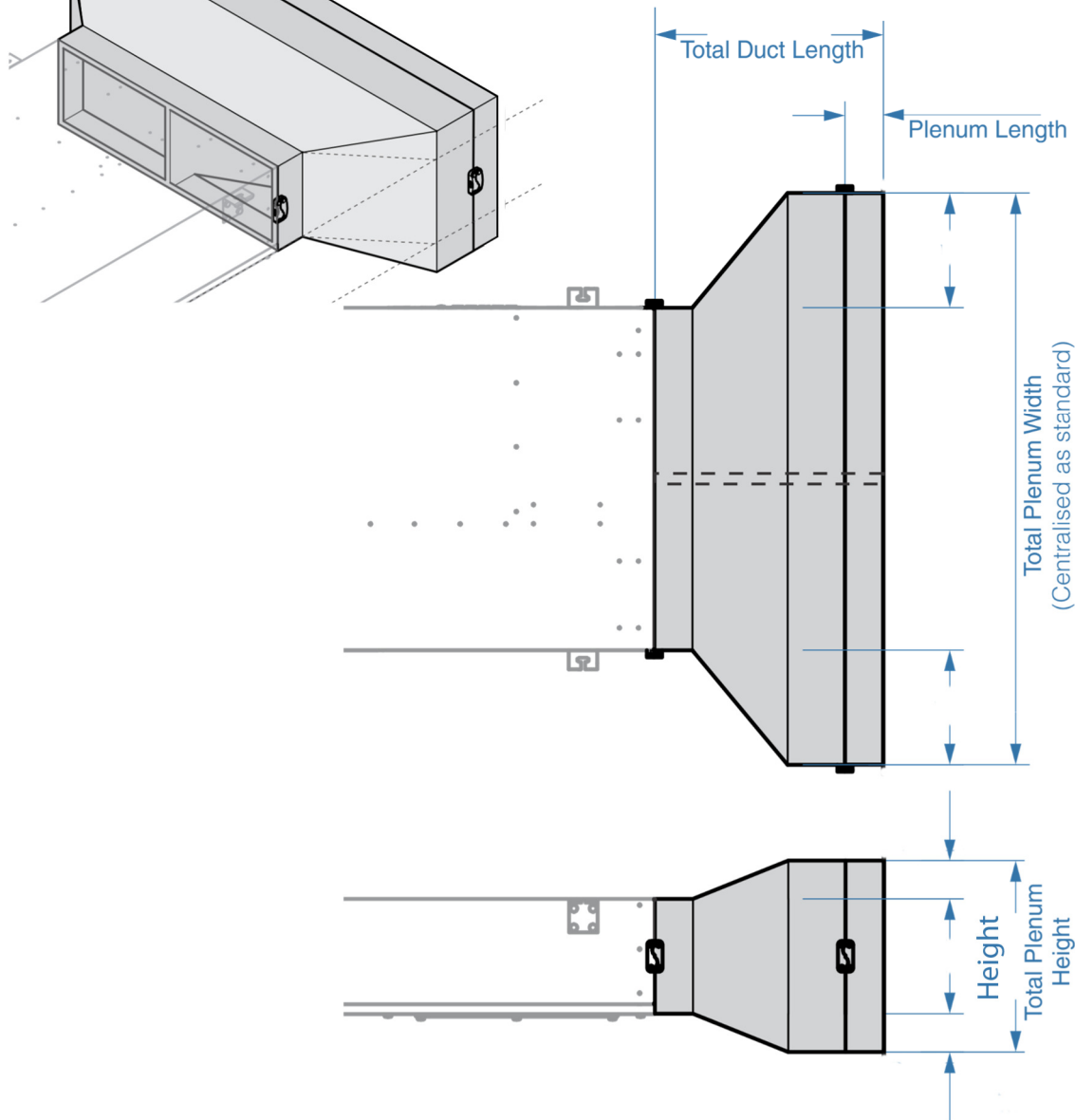
email.:

Unit/Window Ref.:



ecovent Wider/Taller Transition Duct

With the louvre wider and taller than the hybrid unit. Internal Flange



Powdercoated White to **RAL9010** as standard
Specify alternative colour or galvanised finish

Company:

Contact Name:

Address:

Telephone No.:

Job Ref/Order No.:

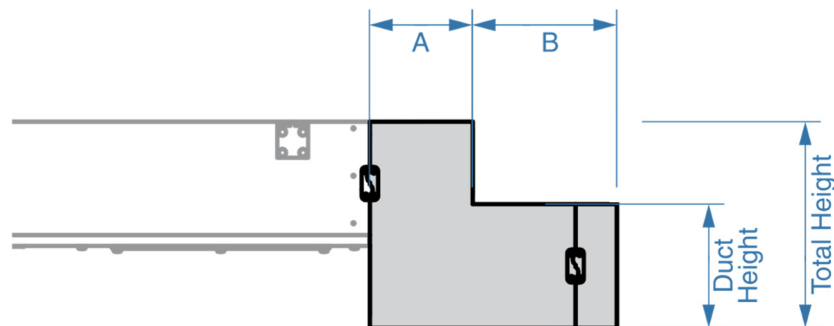
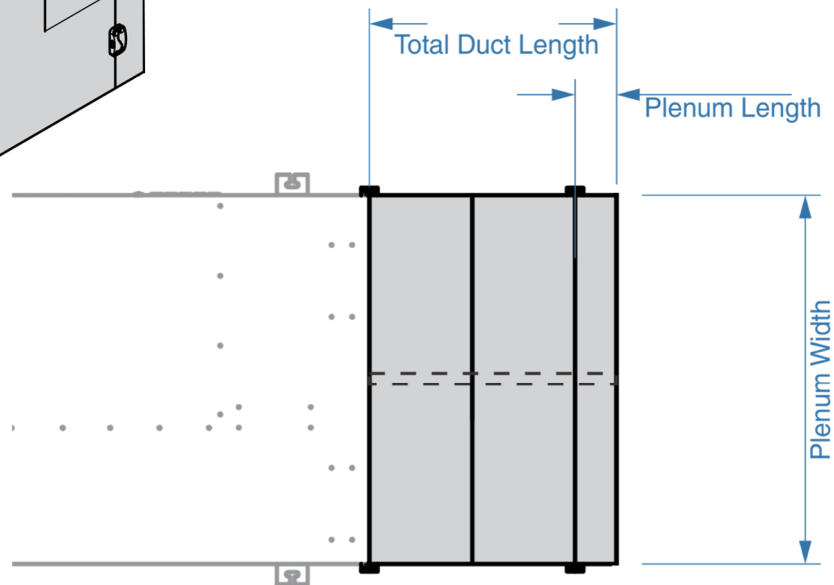
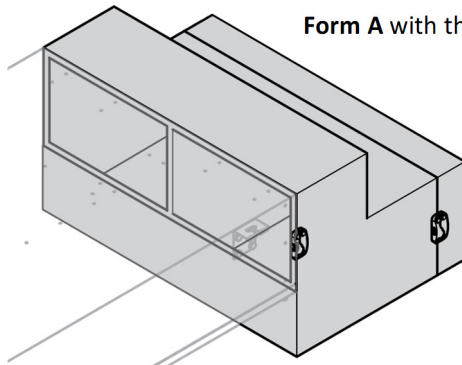
Notes:

email.:

Unit/Window Ref.:

ecovent Stepped Transition Duct

Form A with the louvre the same width as the hybrid unit but offset down. Internal Flange



Powdercoated White to **RAL9010** as standard
Specify alternative colour or galvanised finish

Company:

.....

Contact Name:

.....

Address:

.....

.....

.....

Telephone No.:

email.:

.....

Job Ref/Order No.:

Unit/Window Ref.:

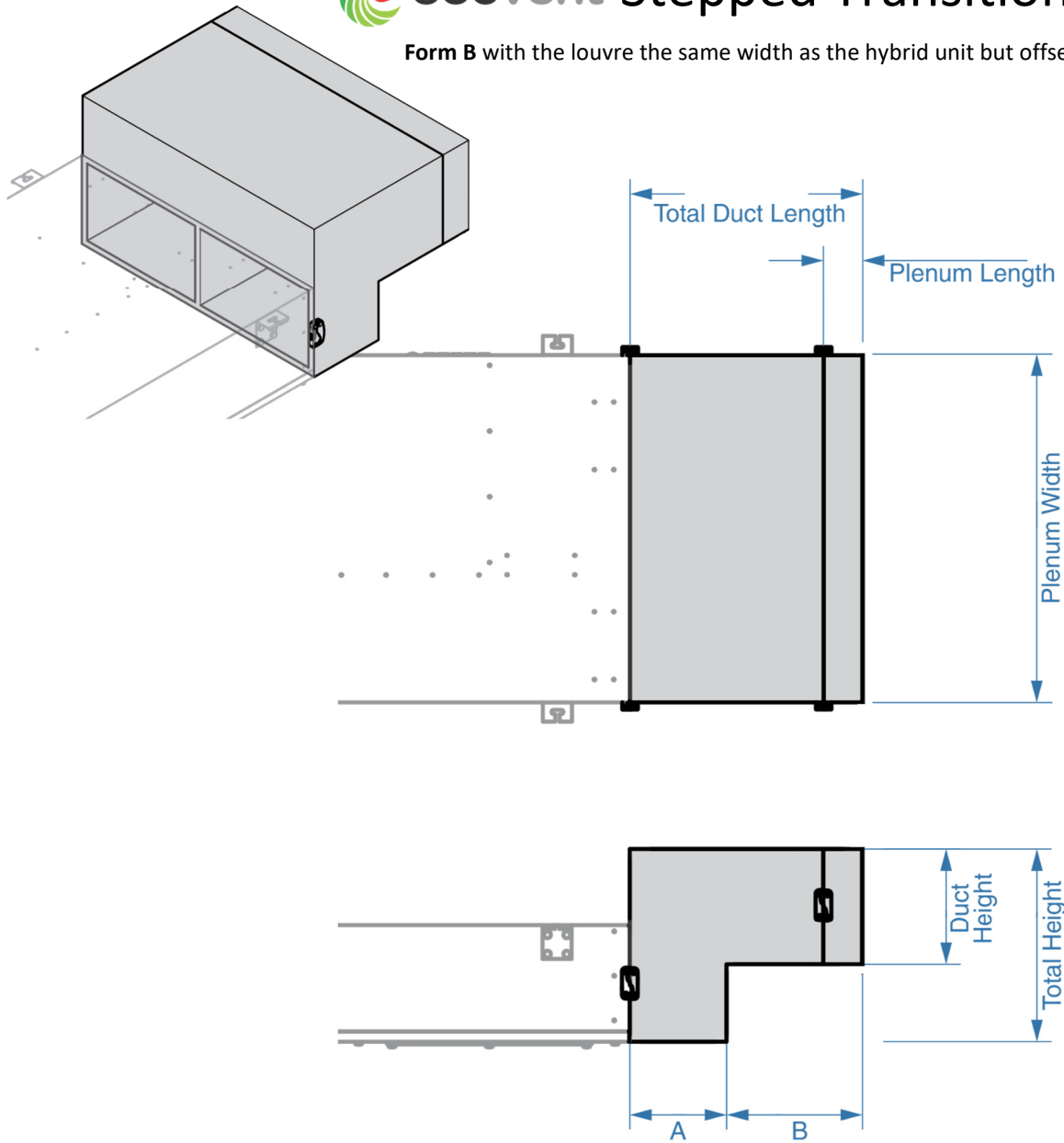
.....

Notes:

.....

ecovent Stepped Transition Duct

Form B with the louvre the same width as the hybrid unit but offset up. Internal Flange



Powdercoated White to **RAL9010** as standard
Specify alternative colour or galvanised finish

Company:

Contact Name:

Address:

Telephone No.:

Job Ref/Order No.:

Notes:

email.:

Unit/Window Ref.: