

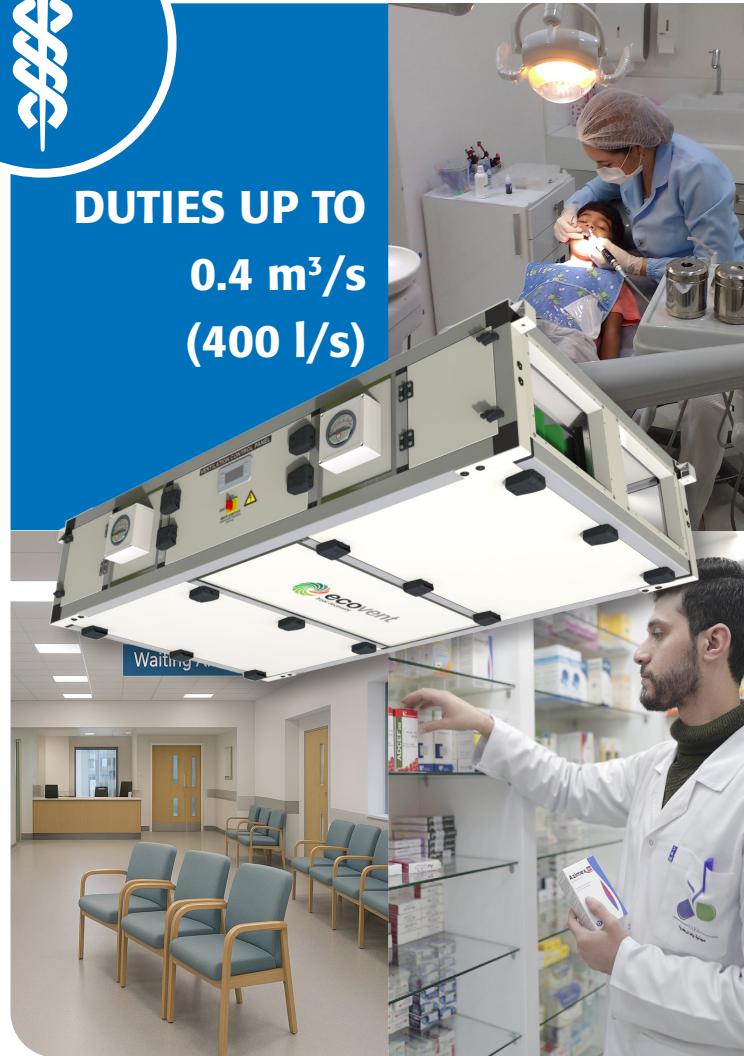
# ecovent<sup>®</sup>

## healthcare solutions

- ❶ Compact Heat Recovery Units
- ❷ HTM 03-01 partial compliance for non-critical healthcare settings
- ❸ Contributes to the Health and Safety of patients and staff
- ❹ Easy and convenient maintenance and inspection
- ❺ Premium efficiency heat recovery units with efficiencies up to 90%
- ❻ Fully optimised low energy EC fans
- ❼ Low Specific Fan Power to help meet Building Regulations Part L2
- ❽ High quality case construction to BS EN 1886
- ❾ Low noise to help meet acoustic requirements, including HTM 08-01
- ❿ Suitable for internal and external applications
- ⓫ Ancillary upgrades available



**DUTIES UP TO**  
**0.4 m<sup>3</sup>/s**  
**(400 l/s)**



### ecovent<sup>®</sup> healthcare

*part of a complete range of innovative,  
flexible products from VES, the HVAC experts*

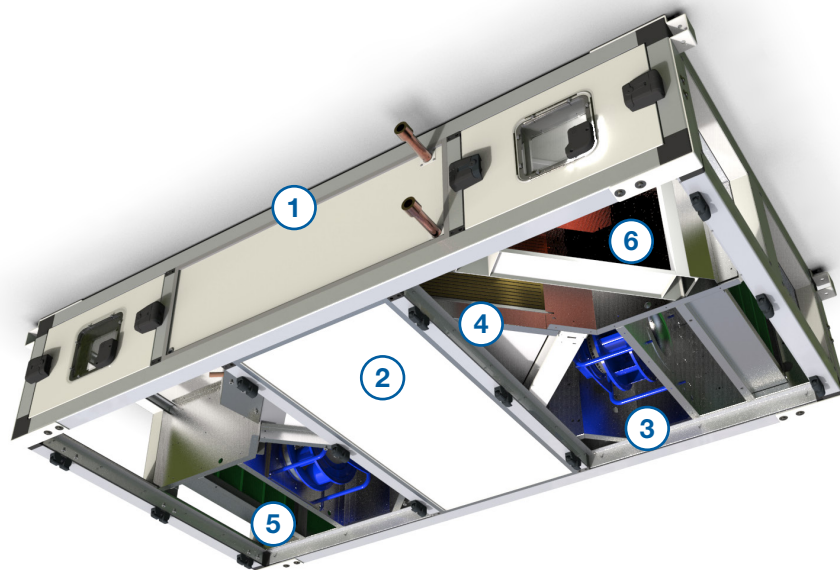


## ecovent® healthcare heat recovery

Introducing a new product designed for healthcare environments: **ecovent®** has been the leading name in mechanical ventilation with heat recovery (MVHR) systems for over 30 years.

This high-efficiency unit provides airflows of up to 0.4 m<sup>3</sup>/s (400 l/s) while maintaining low Specific Fan Power (SFP) and energy consumption, and achieving heat exchanger efficiencies of up to 90%.

Specifically tailored for non-critical healthcare settings such as pharmacies, dental offices, community diagnostic centres (CDC's) and waiting areas, where full-scale compliant ventilation may not be required, the **ecovent®** counterflow healthcare range offers flexibility to suit various applications. Whether installed in ceiling voids, plant rooms, or external locations, configurable in both top or bottom access and stacked orientations, the range includes a variety of heating and control options, ensuring a suitable **ecovent®** unit for every setting.



### Case Construction

The tubular frame construction with polyester-coated galvanised steel panels and stainless steel finishes delivers a premium build with excellent thermal and acoustic efficiency. Tested to BS EN 1886, it achieves TB2, T2, and D1 ratings, with factory airtightness checks ensuring Class L2 compliance. Pressurised fan sections feature hinged, double-latch access, with viewing ports and IP56 LED lights for inspection where appropriate.



### Energy Efficient

Energy efficient units with low SFPs to help achieve Building Regulations and other technical guides. Units are fully tested to BS EN ISO 5801:2017 (airside performance).



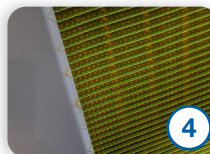
### High Performance Fans

EC fans offering maximum efficiency, minimum energy consumption. Fully controllable and ErP 2015 compliant.



### Configuration

Available in flat, stacked, and weatherproof configurations. Flat units offer both top and bottom access, while weatherproof models incorporate lids and bolt-on cowls, allowing components to be repositioned as required.



### Heat Exchanger

Gold epoxy coated aluminium fins and powder coated casing. ErP 2018 EU1253 73% minimum efficiency counterflow plate heat exchanger with face and bypass damper. Removable stainless steel drainpan as standard.



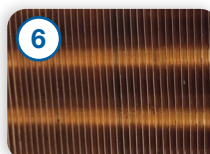
### Supply and Extract Panel Filters

Filters are minimum grade ISO ePM10 ≥50% (M5 EN779 2012) constructed with metal frames. Available with optional magnetohelic pressure gauges for dirty filter indication.



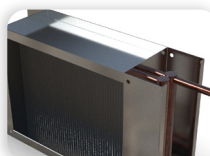
### Shutoff Dampers

Motorised, with C3 2% low leakage galvanised steel blades, metal cogs and linkages. Spring return actuator with end switches available on request.



### Heating Coil

Heating coil constructed with copper fins, copper tubing and powder coated galvanised frames. Access is provided to both sides of the coil for cleaning.



### Ancillary Upgrades

Duct mounted secondary filter modules in a range of grades and types. Bolt-on cooling coils complete with polyester coated aluminium fins, stainless-steel casing and removable moisture eliminators.

## Selection data

### ecovent EVCH262-1

## Performance

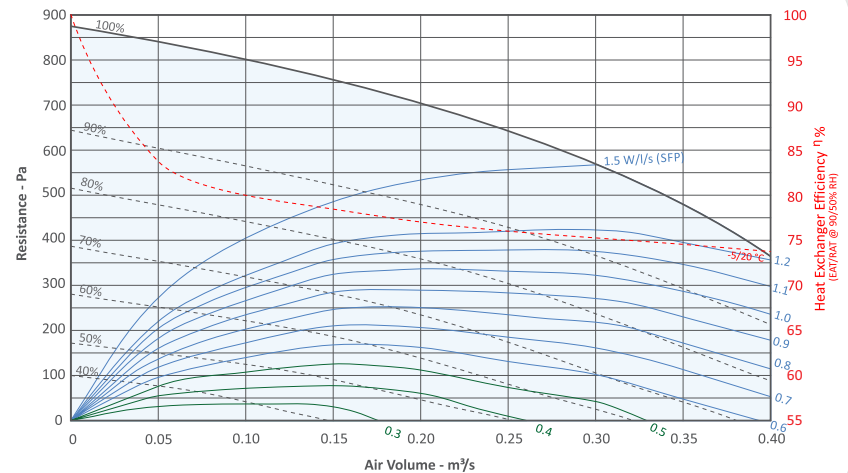
$$\text{SFP} = \frac{\text{Electrical input power (Watts)}}{\text{Air volume flow rate (litres/second)}}$$

Note: SFP figures quoted at voltages tested in accordance with BS EN ISO 5801:2017 for each of the two fans.

Tolerances:  
On flow rates: +/- 5%  
On acoustic power and pressure: Levels: +/- 3 dB  
By octave band: +/- 5 dB

Heat exchanger efficiency is calculated based upon EAT -5 °C and RAT +20 °C.

Duty performance curves



| Size      | Phase   | Motor Size | Voltage | Fan Speed | Motor Full Load Current | Speed Control |
|-----------|---------|------------|---------|-----------|-------------------------|---------------|
| EVCH262-1 | 1 Phase | 0.500 kW   | 230 VAC | 3080 rpm  | 2.5 A                   | EC            |

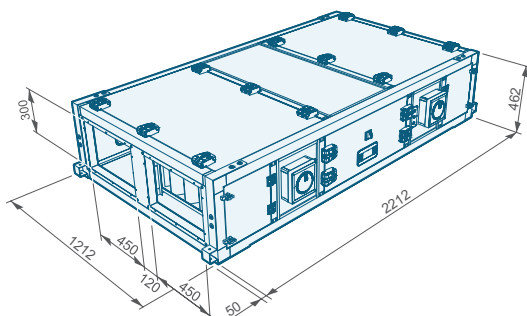
## Acoustic data

| Fan Speed | Sound Power Levels | Sound Power Level, dB re 1 pW,<br>@ Octave Band Centre Frequency (Hz) |     |     |     |    |    |    |    | Overall Sound Pressure Level |        |
|-----------|--------------------|---|-----|-----|-----|----|----|----|----|------------------------------|--------|
|           |                    | 63  | 125 | 250 | 500 | 1k | 2k | 4k | 8k | LpA@1m                       | LpA@3m |
| 100%      | Casing Radiated    | 76  | 70  | 61  | 61  | 52 | 51 | 45 | 41 | 45                           | 39     |
|           | Intake             | 63  | 67  | 74  | 76  | 70 | 65 | 63 | 59 |                              |        |
|           | Outlet             | 77  | 62  | 67  | 68  | 64 | 59 | 47 | 35 |                              |        |
| 80%       | Casing Radiated    | 71  | 65  | 62  | 47  | 46 | 46 | 40 | 35 | 40                           | 34     |
|           | Intake             | 57  | 64  | 72  | 67  | 64 | 59 | 57 | 53 |                              |        |
|           | Outlet             | 69  | 61  | 69  | 61  | 58 | 54 | 42 | 28 |                              |        |
| 60%       | Casing Radiated    | 68  | 62  | 56  | 43  | 43 | 42 | 36 | 32 | 36                           | 29     |
|           | Intake             | 51  | 62  | 72  | 60  | 56 | 51 | 47 | 44 |                              |        |
|           | Outlet             | 56  | 50  | 59  | 51  | 49 | 45 | 33 | 19 |                              |        |

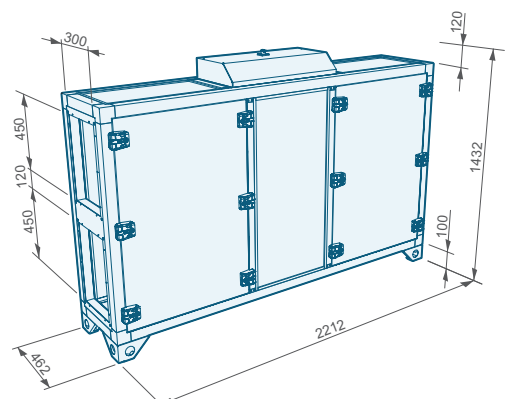
Units are independently tested at ISVR in accordance with BS EN ISO 3744:2010

## Unit dimensions

Dimensions



**Internal/Flat** Weight: 320 kg



**Internal/Stacked** Weight: 325 kg



# Products and Services from VES HVAC Solutions

## Air Handling Units

- ▶ **MAX bespoke ventilation**  
Customer driven solution, designed to fit any application with duties up to 32.0 m<sup>3</sup>/s
- ▶ **ecovent counterflow**  
Premium efficiency heat recovery with duties up to 0.70 m<sup>3</sup>/s
- ▶ **ecovent mini**  
Compact heat recovery with duties up to 0.18 m<sup>3</sup>/s

## Supply and Extract Fans

- ▶ **Colourfan Supply Acoustic**  
Premium efficiency, low noise supply units
- ▶ **Colourfan Extract Acoustic**  
Premium efficiency, low noise extract units
- ▶ **Colourfan Twin Extract Acoustic**  
Premium efficiency, low noise twin extract units

## Classroom Ventilation Units

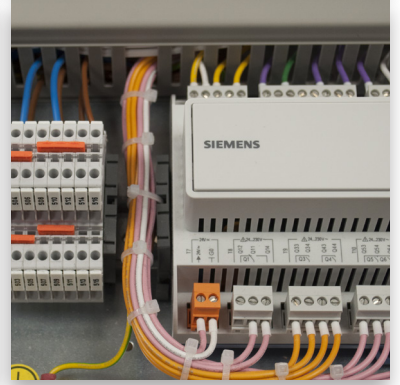
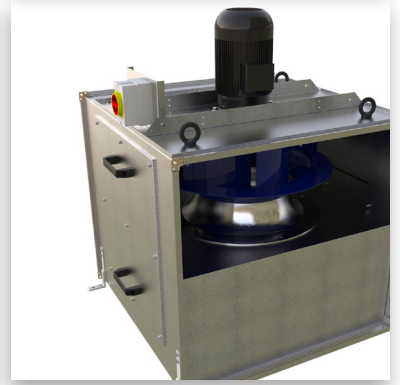
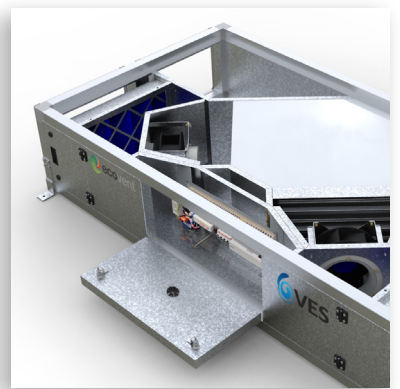
- ▶ **ecovent hybrid**  
Natural classroom ventilation enhanced by low powered fans
- ▶ **ecovent education solutions**  
Net zero classroom solution, optimised for cross ventilation strategies

## Kitchen Extract & Roof Extract

- ▶ **T-Line**  
High temperature extract units with duties up to 11.0 m<sup>3</sup>/s and operating temperatures up to 120°C
- ▶ **Dome**  
Premium efficiency, lightweight, roof extract unit

## Controls & Services

- ▶ **Controls**  
Design, manufacturing, assembling and testing in house  
Bespoke solutions for any project or application
- ▶ **Specialist Site Service Projects**  
Plant refurbishment, energy saving upgrades  
AHU flat pack installation where access is restricted  
Maintenance and spares services



To order, enquire or find out more about how **VES** can help you / your customers...

✉ Email us at **sales@ves.co.uk**

🌐 Visit our website at **ves.co.uk**

☎ Telephone **02380 461150**

Eagle Close, Chandlers Ford,

Eastleigh, Hampshire

SO53 4NF



VES reserves the right to amend product specifications and details without notice.  
© 2025 VES-MK-0023-V2 Rev 00 09/25