

# ecovent<sup>®</sup>

## healthcare solutions

- ▶ Compact Heat Recovery Units
- ▶ HTM 03-01 partial compliance for non-critical healthcare settings
- ▶ Contributes to the Health and Safety of patients and staff
- ▶ Easy and convenient maintenance and inspection
- ▶ Premium efficiency heat recovery units with efficiencies up to 90%
- ▶ Fully optimised low energy EC fans
- ▶ Low Specific Fan Power to help meet Building Regulations Part L2
- ▶ High quality case construction to BS EN 1886
- ▶ Low noise to help meet acoustic requirements, including HTM 08-01
- ▶ Suitable for internal and external applications
- ▶ Ancillary upgrades available



**DUTIES UP TO**  
**0.4 m<sup>3</sup>/s**  
**(400 l/s)**



### ecovent<sup>®</sup> healthcare

*part of a complete range of innovative,  
flexible products from VES, the HVAC experts*

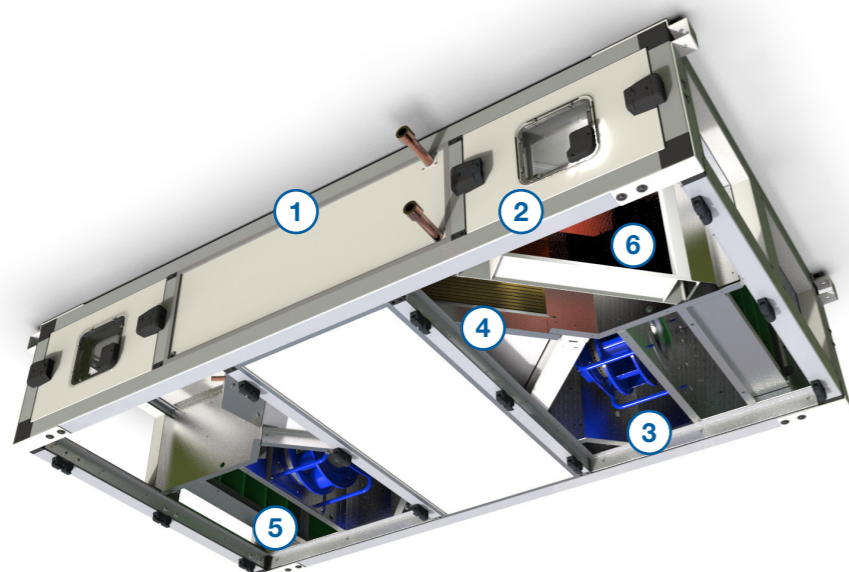


## ecovent® healthcare heat recovery

Introducing a new product designed for healthcare environments: ecovent® has been the leading name in mechanical ventilation with heat recovery (MVHR) systems for over 30 years.

This high-efficiency unit provides airflows of up to 0.4 m³/s (400 l/s) while maintaining low Specific Fan Power (SFP) and energy consumption, and achieving heat exchanger efficiencies of up to 90%.

Specifically tailored for non-critical healthcare settings such as pharmacies, dental offices, community diagnostic centres (CDC's) and waiting areas, where full-scale compliant ventilation may not be required, the ecovent® counterflow healthcare range offers flexibility to suit various applications. Whether installed in ceiling voids, plant rooms, or external locations, configurable in both top or bottom access orientation, the range includes a variety of heating and control options, ensuring a suitable ecovent® unit for every setting.



### Case Construction

The quality tubular frame construction, featuring polyester-coated galvanised steel panels and stainless steel internal finishes, results in a premium build that offers high performance for both thermal and acoustic efficiency. Tested to BS EN 1886 standards, it achieves Thermal Bridging (TB2), Thermal Transmittance (T2), and Deflection (D1). Factory airtightness tests are conducted prior to delivery to meet Class L2 requirements.



### Energy Efficient

Energy efficient units with low SFPs to help achieve Building Regulations and other technical guides. Units are fully tested to BS EN ISO 5801:2017 (airside performance).



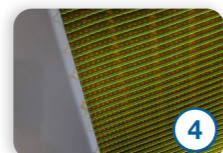
### Access Doors

Hinged access featuring double latch entry on pressurised fan sections. Viewing ports and IP56 LED lights fitted where appropriate for visual inspection.



### High Performance Fans

EC fans offering maximum efficiency, minimum energy consumption. Fully controllable and ErP 2015 compliant.



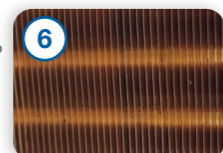
### Heat Exchanger

Gold epoxy coated aluminium fins and powder coated casing. ErP 2018 EU1253 73% minimum efficiency counterflow plate heat exchanger with face and bypass damper. Removable stainless steel drainpan as standard.



### Supply and Extract Panel Filters

Filters are minimum grade ISO ePM10 ≥50% (M5 EN779 2012) constructed with metal frames. Complete with magnehelic pressure gauges for dirty filter indication.



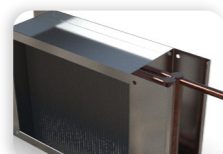
### Heating Coil

Heating coil constructed with copper fins, copper tubing and powder coated galvanised frames. Access is provided to both sides of the coil for cleaning.



### Shutoff Dampers

Motorised, with C3 2% low leakage galvanised steel blades, metal cogs and linkages. Spring return actuator with end switches available on request.



### Ancillary Upgrades

Duct mounted secondary filter modules in a range of grades and types. Bolt-on cooling coils complete with polyester coated aluminium fins, stainless-steel casing and removable moisture eliminators.

## Selection data

### ecovent EVCH262-1

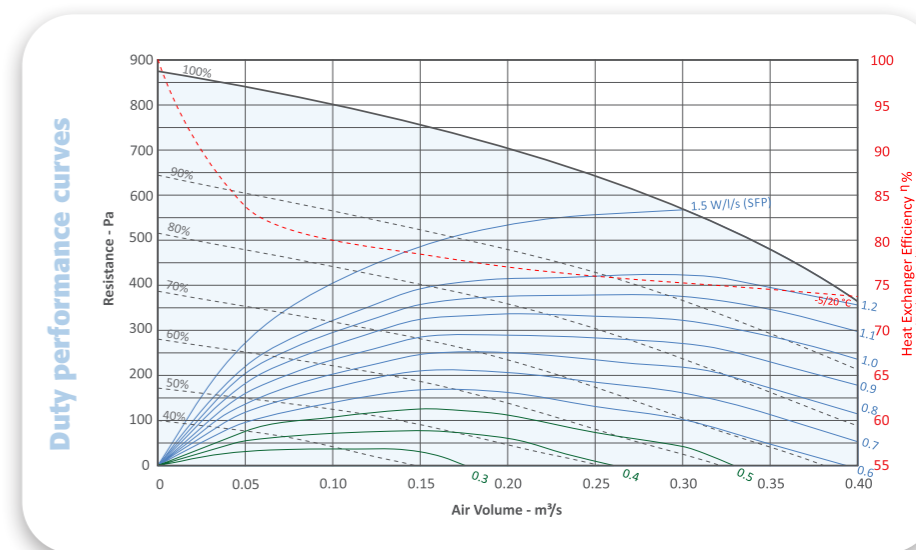
## Performance

$$\text{SFP} \frac{\text{Watts/litres/second}}{\text{second}} = \frac{\text{Electrical input power (Watts)}}{\text{Air volume flow rate (litres/second)}}$$

Note: SFP figures quoted at voltages tested in accordance with BS EN ISO 5801:2017 for each of the two fans.

Tolerances:  
On flow rates: +/- 5%  
On acoustic power and pressure: Levels: +/- 3 dB  
By octave band: +/- 5 dB

Heat exchanger efficiency is calculated based upon EAT -5 °C and RAT +20 °C.



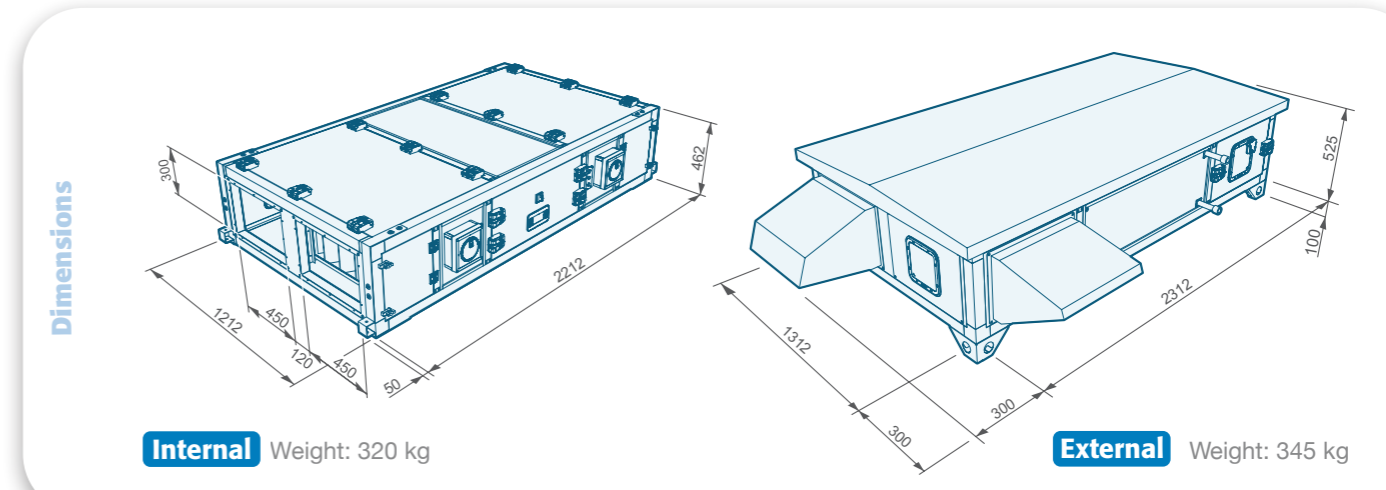
Size	Phase	Motor Size	Voltage	Fan Speed	Motor Full Load Current	Speed Control
EVCH262-1	1 Phase	0.500 kW	230 VAC	3080 rpm	2.5 A	EC

## Acoustic data

Fan Speed	Sound Power Levels	Sound Power Level, dB re 1 pW, @ Octave Band Centre Frequency (Hz)								Overall Sound Pressure Level	
		63	125	250	500	1k	2k	4k	8k	LpA@1m	LpA@3m
100%	Casing Radiated	76	70	61	61	52	51	45	41	45	39
	Intake	63	67	74	76	70	65	63	59		
	Outlet	77	62	67	68	64	59	47	35		
80%	Casing Radiated	71	65	62	47	46	46	40	35	40	34
	Intake	57	64	72	67	64	59	57	53		
	Outlet	69	61	69	61	58	54	42	28		
60%	Casing Radiated	68	62	56	43	43	42	36	32	36	29
	Intake	51	62	72	60	56	51	47	44		
	Outlet	56	50	59	51	49	45	33	19		

Units are independently tested at ISVR in accordance with BS EN ISO 3744:2010

## Unit dimensions



# Products and Services from VES HVAC Solutions

## Air Handling Units

- ▶ **MAX bespoke ventilation**  
Customer driven solution, designed to fit any application with duties up to 32.0 m<sup>3</sup>/s
- ▶ **ecovent counterflow**  
Premium efficiency heat recovery with duties up to 0.70 m<sup>3</sup>/s
- ▶ **ecovent mini**  
Compact heat recovery with duties up to 0.18 m<sup>3</sup>/s

## Supply and Extract Fans

- ▶ **Colourfan Supply Acoustic**  
Premium efficiency, low noise supply units
- ▶ **Colourfan Extract Acoustic**  
Premium efficiency, low noise extract units
- ▶ **Colourfan Twin Extract Acoustic**  
Premium efficiency, low noise twin extract units

## Classroom Ventilation Units

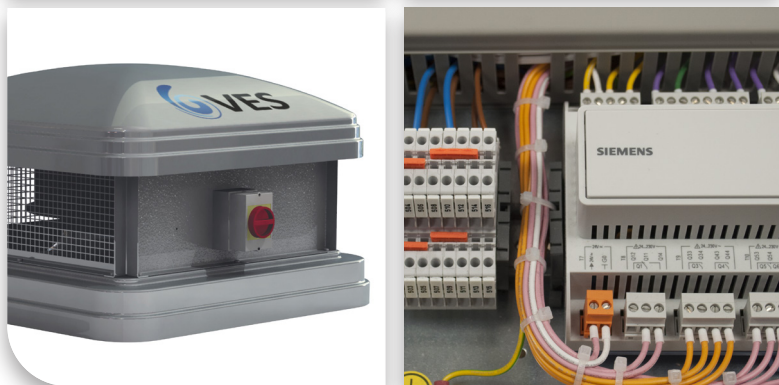
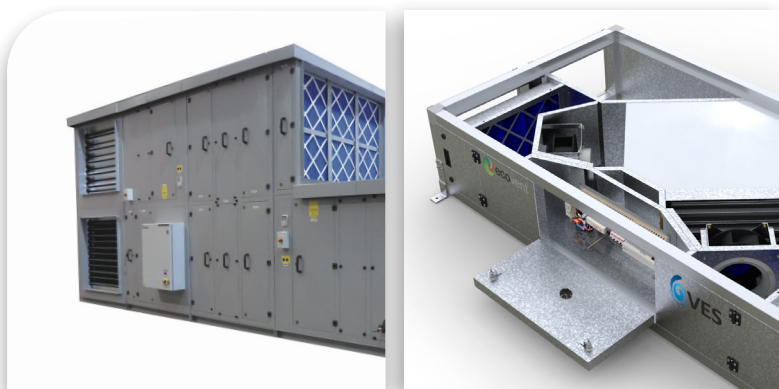
- ▶ **ecovent hybrid**  
Natural classroom ventilation enhanced by low powered fans
- ▶ **ecovent education solutions**  
Net zero classroom solution, optimised for cross ventilation strategies

## Kitchen Extract & Roof Extract

- ▶ **T-Line**  
High temperature extract units with duties up to 11.0 m<sup>3</sup>/s and operating temperatures up to 120°C
- ▶ **Dome**  
Premium efficiency, lightweight, roof extract unit

## Controls & Services

- ▶ **Controls**  
Design, manufacturing, assembling and testing in house  
Bespoke solutions for any project or application
- ▶ **Specialist Site Service Projects**  
Plant refurbishment, energy saving upgrades  
AHU flat pack installation where access is restricted  
Maintenance and spares services



To order, enquire or find out more about how VES can help you / your customers...

✉ Email us at [sales@ves.co.uk](mailto:sales@ves.co.uk)

🌐 Visit our website at [ves.co.uk](http://ves.co.uk)

☎ Telephone **02380 461150**

Eagle Close, Chandlers Ford,

Eastleigh, Hampshire

SO53 4NF



VES reserves the right to amend product specifications and details without notice.  
© 2024 VES-MK-0023-V1 Rev 01 10/24