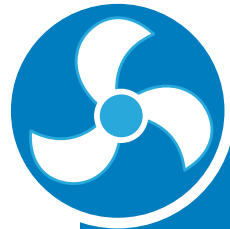
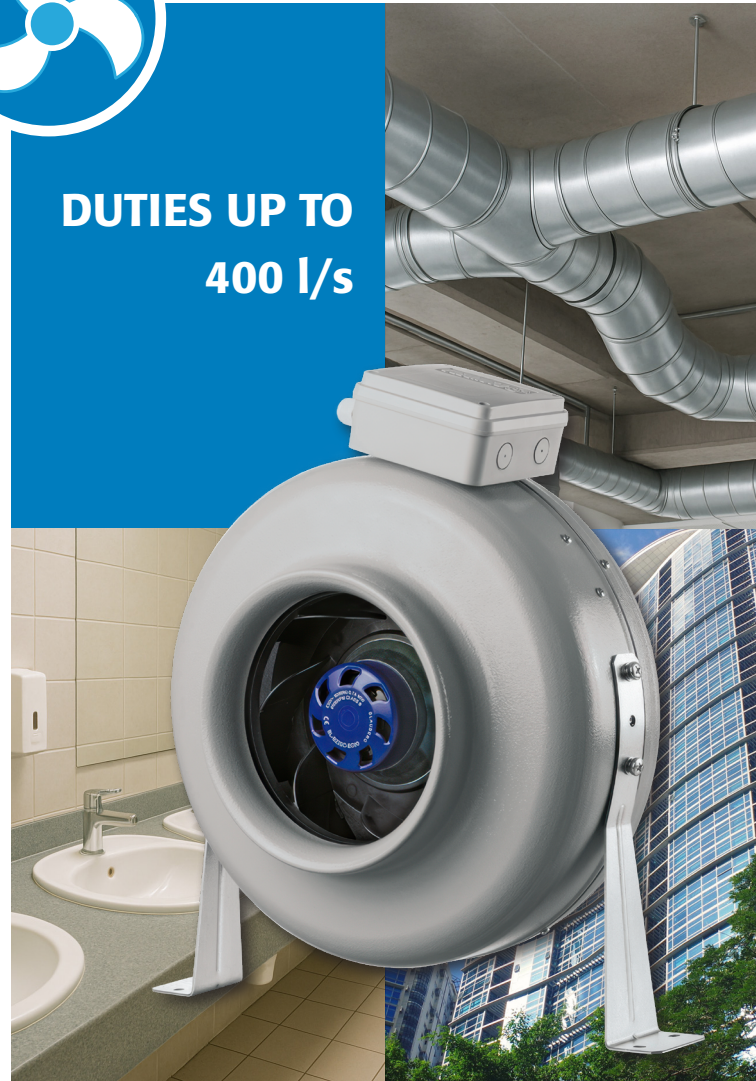


# roundfan

- ▶ Steel cased utility fans
- ▶ Duty range up to 400 l/s
- ▶ Low energy / high efficiency fans
- ▶ EC Fan Technology
- ▶ Easy installation
- ▶ Range of accessories and solutions
- ▶ Control options to suit application requirements



**DUTIES UP TO  
400 l/s**



## roundfan

*Part of a complete range of innovative, flexible products  
from the HVAC experts*



# roundfan

## roundfan

The VES **roundfan** range delivers reliable, high-performance airflow solutions for domestic, commercial, and industrial environments. Whether you're outfitting offices, shops, kitchens, toilets, workshops, or storerooms, these fans are the ideal choice for both supply and extract ventilation systems.

Crafted from durable steel and featuring an in-line centrifugal design, VES **roundfan** can be installed vertically or horizontally to suit your needs. They are compatible with circular and spiral ductwork and are designed to handle a wide range of air temperatures.

Quick to install and supported by a range of accessories—including clamps, silencers, and mounting options—these fans are built for flexibility. VES **roundfan** can also be integrated into comprehensive HVAC solutions, including speed control, heat recovery, and heating systems.

**Fast to fit. Easy to work with. Built to last.**

- ▶ EC Fan Technology
- ▶ Suitable for domestic, commercial and industrial applications
- ▶ Backward curve high efficiency blade design
- ▶ Air temperature range -25...60 °C
- ▶ Horizontal or vertical mounting
- ▶ 0-10V control signal from a variety of sources
- ▶ Range of accessories and solutions
- ▶ Control options to suit application requirements

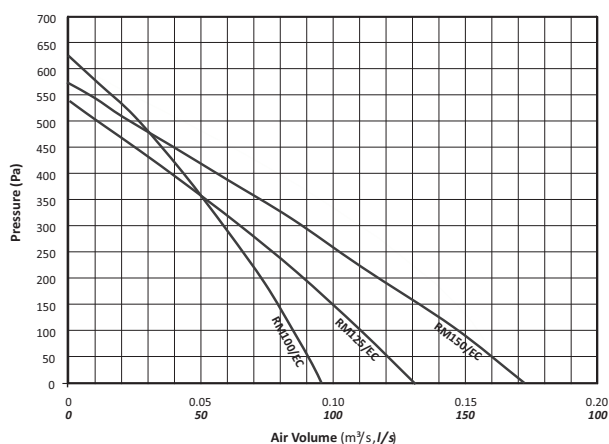


## Selection Data

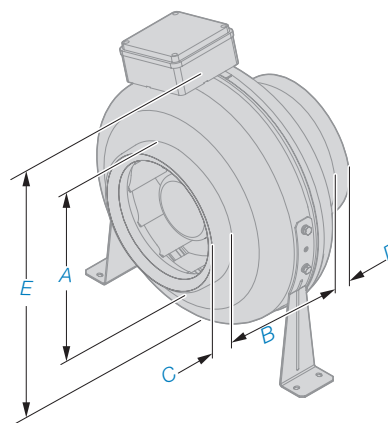
### RM EC Fans: 100 - 150

The RM roundfan is designed around a single platform with EC fan technology.

## Performance



## Dimensions



## Technical Data

Unit Type	Phase	Voltage (V AC)	Power (W)	Motor FLC (A)	Fan Speed (rpm)	Operating Temperature (°C max)
RM100/EC	1	230	90	0.70	3600	60
RM125/EC	1	230	83	0.58	3400	60
RM150/EC	1	230	107	0.89	3060	60

## Sound Data

Unit Type	Sound Spectrum dB re 10 <sup>-12</sup> W PWL Centre								Casing Noise Breakout
	63	125	250	500	1k	2k	4k	8k	dBA @ 3m
RM100/EC	73	82	88	79	70	66	61	49	44
RM125/EC	69	83	89	78	71	68	63	52	45
RM150/EC	51	85	82	70	68	64	63	51	48

## Dimension Data

Unit Type	Dimensions mm					Weight (kg)
	A	B	C	D	E	
RM100/EC	98	153	25	25	255	3.45
RM125/EC	123	153	25	25	255	3.58
RM150/EC	149	190	25	25	305	4.70

Note: For silencers please refer to silencer section of catalogue.

# roundfan

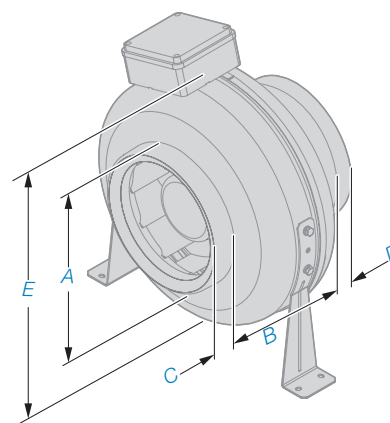
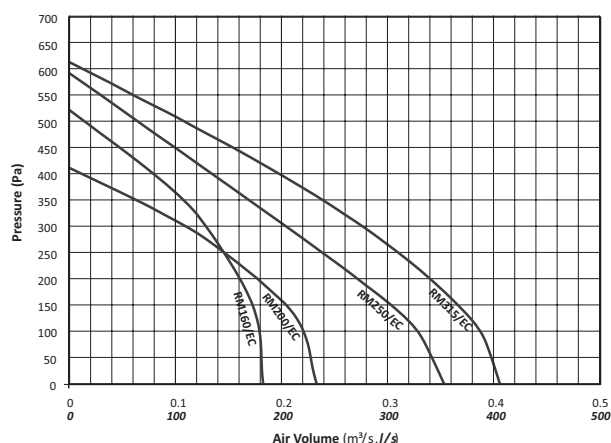
## Selection Data

### RM EC Fans: 160 - 315

The RM Round Fan is designed around a single platform with EC fan technology.

## Performance

## Dimensions



## Technical Data

Unit Type	Phase	Voltage (V AC)	Power (W)	Motor FLC (A)	Fan Speed (rpm)	Operating Temperature (°C max)
RM160/EC	1	230	108	0.90	3030	60
RM200/EC	1	230	83	0.63	2500	60
RM250/EC	1	230	164	1.15	2900	60
RM315/EC	1	230	164	1.15	2900	60

## Sound Data

Unit Type	Sound Spectrum dB re 10 <sup>-12</sup> W PWL Centre								Casing Noise Breakout
	63	125	250	500	1k	2k	4k	8k	dBA @ 3m
RM160/EC	81	86	78	69	65	60	48	51	48
RM200/EC	45	75	79	77	77	80	72	62	47
RM250/EC	65	77	74	83	85	83	78	64	46
RM315/EC	55	66	76	73	81	84	77	69	48

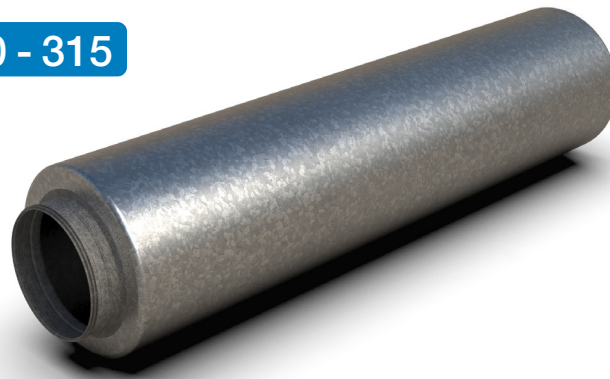
## Dimension Data

Unit Type	Dimensions (mm)					Weight (kg)
	A	B	C	D	E	
RM160/EC	159	190	25	25	305	4.90
RM200/EC	198	185	30	30	345	5.70
RM250/EC	248	190	30	30	345	5.09
RM315/EC	313	200	30	30	405	7.30

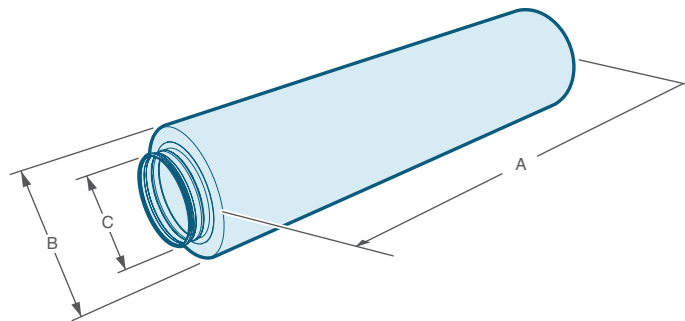
Note: For silencers please refer to silencer section of catalogue.

## Selection Data

### RM Silencers: LD100 - 315



## Dimensions



## Sound Data

Unit Type	Sound Spectrum dB re $10^{-12}$ W PWL Centre							
	63	125	250	500	1k	2k	4k	8k
RM100/EC (LD100)	-5	-8	-15	-33	-39	-40	-36	-20
RM125/EC (LD125)	-4	-8	-13	-30	-35	-35	-31	-15
RM150/EC (LD150)	-4	-7	-12	-23	-30	-36	-31	-15
RM160/EC (LD150)	-4	-7	-12	-23	-30	-36	-31	-15
RM200/EC (LD200)	-7	-9	-14	-32	-39	-36	-26	-15
RM250/EC (LD250)	-5	-8	-12	-24	-30	-30	-22	-14
RM315/EC (LD315)	-6	-9	-14	-23	-32	-32	-18	-15

## Dimension Data

Unit Type	Dimensions mm			
	A	B	C	Weight (kg)
RM100/EC (LD100)	600	204	98	4.6
RM125/EC (LD125)	600	230	123	5.4
RM150/EC (LD150)	600	255	148	6.1
RM160/EC (LD150)	600	255	148	6.1
RM200/EC (LD200)	900	305	198	11.0
RM250/EC (LD250)	900	355	248	13.2
RM315/EC (LD315)	1200	420	313	21.0

Notes: Units are independently tested in accordance with BS EN ISO 3741:2010.  
Tolerances: On flow rates: +/- 5%. On acoustic power and pressure: Levels: +/- 3 dB. By octave band: +/- 5 dB

# roundfan

## Ancillaries

### Fast Clamps



Unit Type	Clamp Fastener
RM100/EC	FK 100
RM125/EC	FK 125
RM150/EC	FK 150
RM160/EC	FK150
RM200/EC	FK 200
RM250/EC	FK 250
RM315/EC	FK 315

### Screen Guards



Unit Type	Screen Guard
RM100/EC	SG 100
RM125/EC	SG 125
RM150/EC	SG 150
RM160/EC	SG 150
RM200/EC	SG 200
RM250/EC	SG 250
RM315/EC	SG 315

### Speed Controllers



- ▶ CFSC1 Speed Controller
- ▶ Suitable for direct connection to EC fans
- ▶ Manual controller for remote speed adjustment



## Product Specification

### 1.1. General

- A. Provide an in-line duct mounted fan for installation with circular ductwork. Fan to meet the performance and configuration as indicated in the schedule and detail drawings. The in-line duct mounted fan shall be of the round type as supplied by VES Andover Ltd a company accredited with BS EN ISO 9001:2015.

### 1.2. Unit Construction

- A. The RM fan shall be provided as a pre-assembled unit comprising an aerodynamically formed galvanized sheet steel case, metal centrifugal fan impeller and hub mounted direct drive motor.
- B. The case shall be designed to suit metric circular duct as indicated in the schedule and detail drawings.
- C. The fan shall be suitable for horizontal or vertical duct mounting.
- D. The fan shall be supplied with a support bracket as standard.

### 1.3. Fan Impeller

- A. The fan shall be fitted with a backward curved blade axial fan impeller finished to match the fan case.

### 1.4. Motor

- A. The fan shall be provided with a 230 VAC single phase EC motor, insulated to class F with IPX4 environmental protection rating.
- B. The motor shall be ball bearing mounted as standard.

### 1.5. Operating Environment

- A. The fan shall be designed to operate in ambient temperatures up to 60 °C.

### 1.6. Controls

- A. The motor shall be pre-wired to a fitted terminal box.
- B. Fan shall be suitable for 0-10V speed control

### 1.7 Ancillaries

- A. The fan shall be fully compatible with a standard range of optional circular duct-mounted silencers.
- B. The fan shall be fully compatible with a standard range of optional duct mounted filter boxes.  
The filter box shall be provided as a pre-assembled unit comprising a single skinned galvanised sheet steel case, G3 panel filter and circular spigots.
- C. The fan shall be fully compatible with a selection from the EHC circular duct mounted electric heater battery range as supplied by VES Andover Ltd.
- D. The fan shall be fully compatible with the optional wire screen guard.

Download specification from [www.ves.co.uk/information-centre](http://www.ves.co.uk/information-centre)

# Products and Services from VES HVAC Solutions

## Air Handling Units

- ▶ **MAX bespoke ventilation**  
Customer driven solution, designed to fit any application with duties up to 32.0 m<sup>3</sup>/s.
- ▶ **ecovent counterflow**  
Premium efficiency heat recovery with duties up to 0.70 m<sup>3</sup>/s
- ▶ **ecovent mini**  
Compact heat recovery with duties up to 0.18 m<sup>3</sup>/s

## Supply and Extract Fans

- ▶ **Colourfan Supply Acoustic**  
Premium efficiency, low noise supply units
- ▶ **Colourfan Extract Acoustic**  
Premium efficiency, low noise extract units
- ▶ **Colourfan Twin Extract Acoustic**  
Premium efficiency, low noise twin extract units

## Classroom Ventilation Units

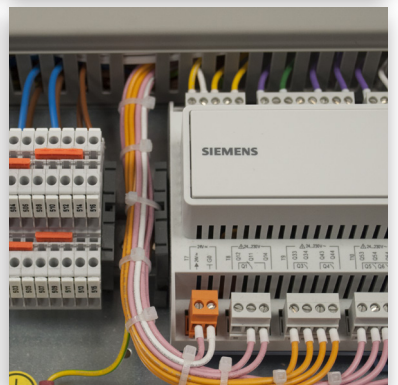
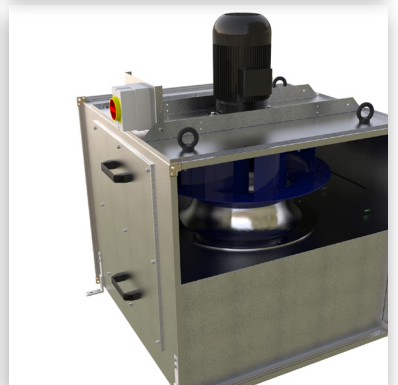
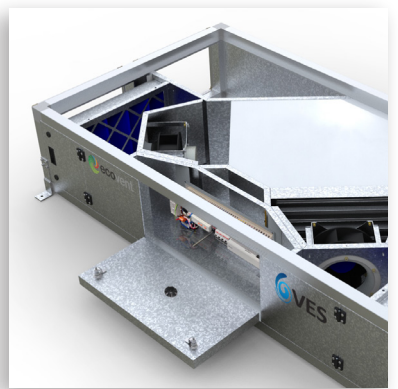
- ▶ **ecovent hybrid**  
Natural classroom ventilation enhanced by low powered fans
- ▶ **ecovent education solutions**  
Net zero classroom solution, optimised for cross ventilation strategies

## Kitchen Extract & Roof Extract

- ▶ **T-Line**  
High temperature extract units with duties up to 11.0 m<sup>3</sup>/s and operating temperatures up to 120°C
- ▶ **Dome**  
Premium efficiency, lightweight, roof extract unit

## Controls & Services

- ▶ **Controls**  
Design, manufacturing, assembling and testing in house  
Bespoke solutions for any project or application
- ▶ **Specialist Site Service Projects**  
Plant refurbishment, energy saving upgrades  
AHU flat pack installation where access is restricted  
Maintenance and spares services



To order, enquire or find out more about how **VES** can help you / your customers...

✉ Email us at **[sales@ves.co.uk](mailto:sales@ves.co.uk)**

🌐 Visit our website at **[ves.co.uk](http://ves.co.uk)**

☎ Telephone **02380 461150**

Eagle Close, Chandlers Ford,

Eastleigh, Hampshire

SO53 4NF



VES reserves the right to amend product specifications and details without notice.  
© 2025 VES-MK-0027-V1 Rev 00 05/25